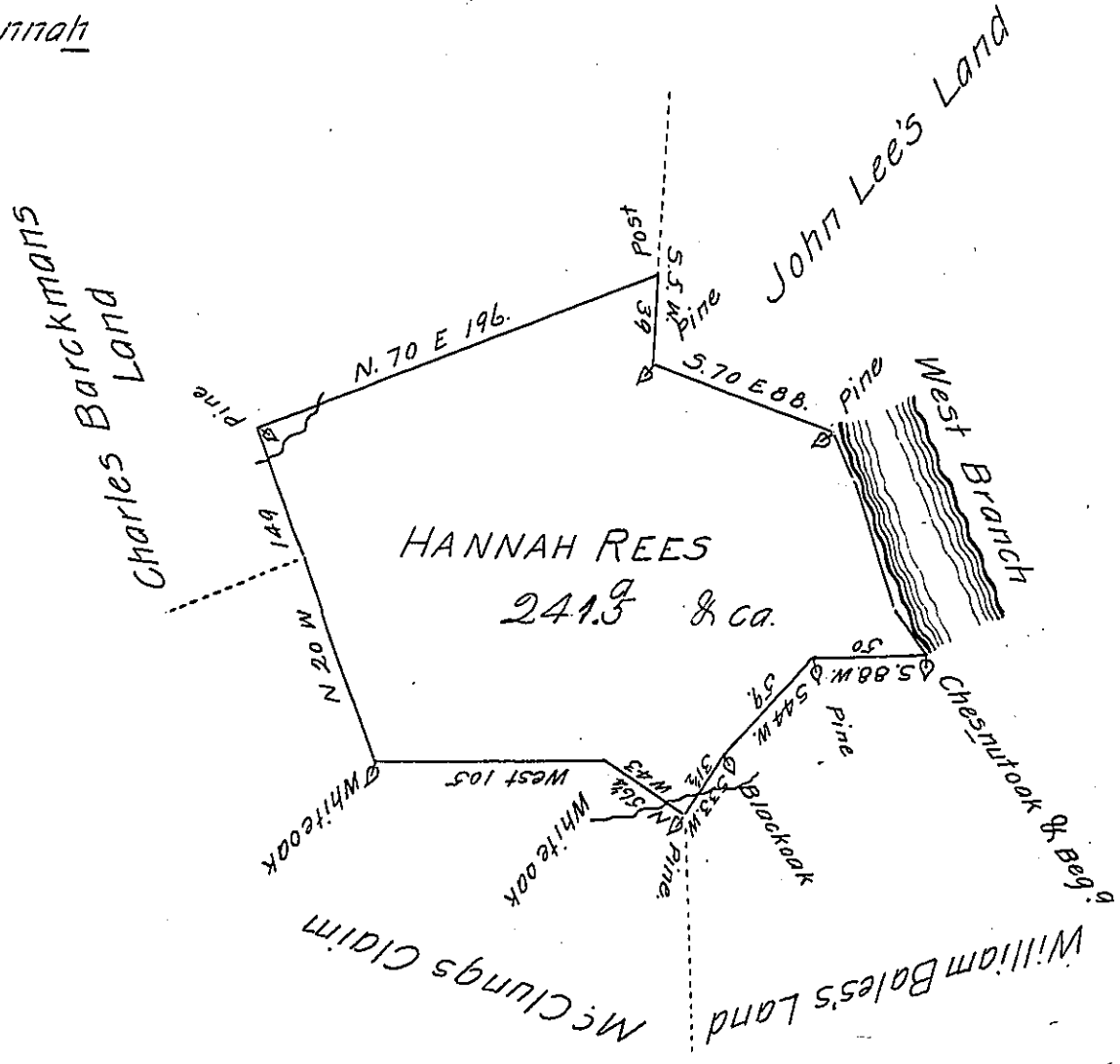


Courses & Distances along the west Branch of Susquehanna

- S. 24. E 20
- S. 17. E 60
- S. 34. E 19



The Draught of a Tract of Land called — Situate in Buffalo Township Northumberland County Containing Two Hundred & Forty one Acres and Ninety Nine Perches with the usual Allowance of Six Acres P Cent for Roads & ca. Surveyed the 10<sup>th</sup> Day of June Anno Domini 1771 In Pursuance of an Order of Survey to Hannah Rees Bearing Date at Philad<sup>a</sup> the 3<sup>d</sup> Day of April Anno Domini 1769 and Numbered 658.

P- W<sup>m</sup> Maclay

To John Lukens Esq<sup>r</sup> S. G. }  
of Pennsylvania }

IN TESTIMONY that the above is a copy of the original remaining on file in the Department of Internal Affairs of Pennsylvania, made conformably to an Act of Assembly approved the 16th day of February, 1833, I have hereunto set my Hand and caused the Seal of said Department to be affixed at Harrisburg, this twenty fourth day of May 1904

*Joseph P. Brown*  
Secretary of Internal Affairs.